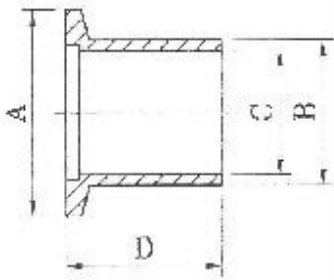
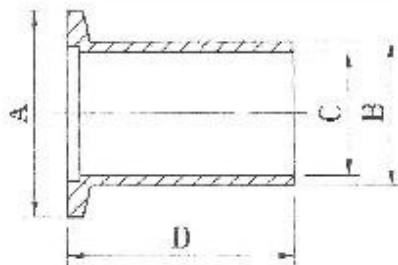


514007



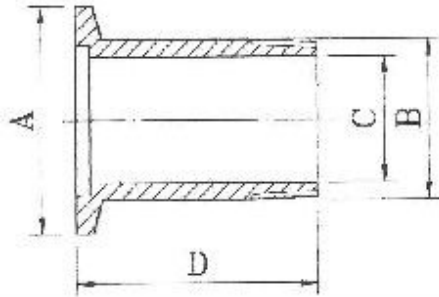
SHORT WELD FLANGE				
Nr. Size	A	B	C	D
514007DN10	30	14	10	26
514007DN16	30	20	16	26
514007DN20	40	25	21	26
514007DN25	40	28	24	26
514007DN32	55	38	34	26
514007DN40	55	44,5	40,5	26
514007DN50	75	57	50,6	26

514008



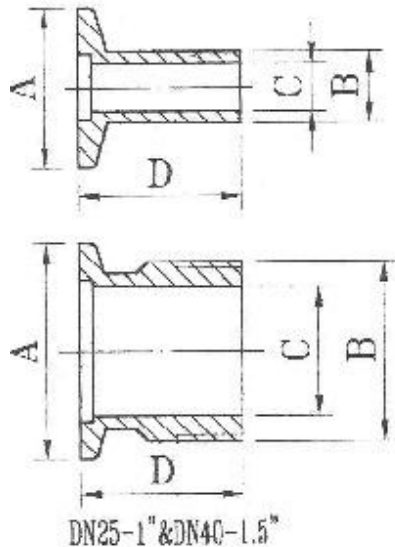
LONG WELD FLANGE				
Nr. Size	A	B	C	D
514008DN 0	30	14	10	55
514008DN16	30	20	16	55
514008DN25	40	28	24	55
514008DN40	55	44,5	40,5	55
514008DN50	75	57	50,6	55

A514023



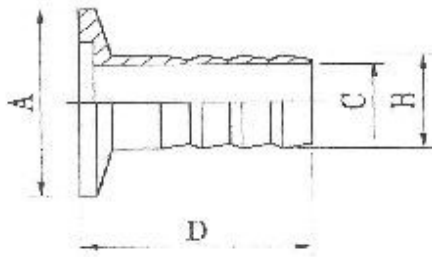
BSPT ADAPTOR				
size	A	B	C	D
DN 10-1/4"	30	1/4" x 19 BSPT	9	30
DN 10-3/8"	30	3/8" x 19 BSPT	10	30
DN 16-1/2"	30	1/2" x 14 BSPT	16	30
DN 25-3/8"	40	3/4" x 14 BSPT	20	30
DN 25-1"	40	1" x 11 BSPT	24	30
DN 40-1.25"	55	1,25" x 11 BSPT	35	30
DN 40-1.5"	55	1,5" x 11 BSPT	41	30
DN 50-2"	75	2"x11 BSPT	51	30

A514040



BSP ADAPTOR				
size	A	B	C	D
DN 10-1/4"	30	1/4" x 19 BSP	9	30
DN 10-3/8"	30	3/8" x 19 BSP	10	30
DN 16-1/2"	30	1/2" x 14 BSP	16	30
DN 25-3/8"	40	3/4" x 14 BSP	20	30
DN 25-1"	40	1" x 11 BSP	24	30
DN 40-1.25"	55	1,25" x 11 BSP	35	30
DN 40-1.5"	55	1,5" x 11 BSP	41	30
DN 50-2"	75	2"x11 BSP	51	30

A514048



HOSE NOZZLE				
Nr.size	A	B	C	D
A514048DN 10/12	30	12	8	40
A514048DN 16/12	30	12	8	40
A514048DN 25/12	40	12	8	40
A514048DN 25/20	40	20	16	40
A514048DN 40/16	55	16	12	40
A514048DN 40/20	55	20	16	40
A514048DN 40/25"	55	25	20	40
A514048DN 50/25	75	25	20	40