



HIGH QUALITY SCIENTIFIC RESOURCES

FLEXIBLE MANIPULATORS

1.0 FEATURES:

- Manual actuation
- UHV compatible materials
- Edge welded bellow seal
- Flange : CF35
- 4-1/2 " linear travel & 22⁰ wobble movement

2.0 SPECIFICATIONS:

2.1 Materials:

Flange / Body : AISI-304

Bellow : AISI-347

2.2 Vacuum Range: < 5x10⁻¹⁰ Torr

2.3 Leak Rate : < 2x10⁻¹⁰ std cc/sec of Helium

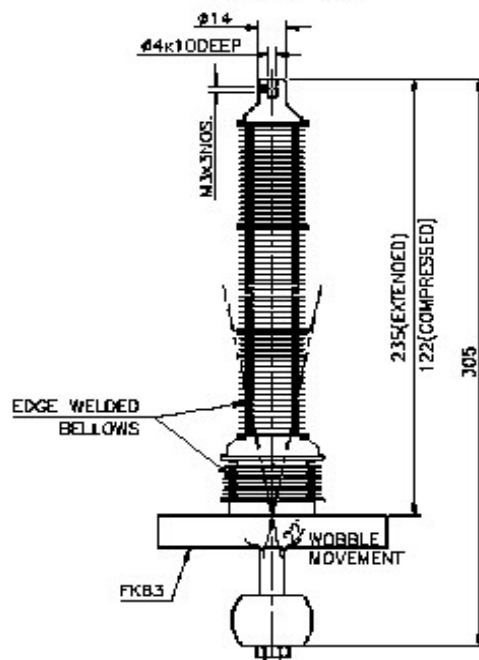
2.4 Temperature Range: -20⁰ C to 100⁰ C with actuator
230⁰ C without actuator

2.5 Weights & Dimensions: as per enclosed sheet



HIGH QUALITY SCIENTIFIC RESOURCES

CF WOBBLE STICK (WITH CF-63)



ORDER CODE: FK63WS

ALL DIMENSIONS ARE IN MM. & BRACKETED DIMENSIONS ARE IN INCHES.



HIGH QUALITY SCIENTIFIC RESOURCES

XYZ-MANIPULATOR

1.0 FEATURES:

- UHV compatible materials
- Manual or motorized actuation
- Edge welded bellow seal
- Bakeable to 230⁰ C
- ± 12.5 and 25 mm off center XY motion
- Z axis travel as per customer 's request
- Suitable with CF port mounts

2.0 SPECIFICATIONS:

2.1 Materials:

Flanges : AISI-304
Bellow : AISI-347
Body : Anodized aluminium

2.2 Vacuum Range: < 5x10⁻¹⁰ Torr

2.3 Leak Rate : < 2x10⁻¹⁰ std cc/sec of Helium

2.4 Temperature Range: -20⁰ C to 230⁰ C

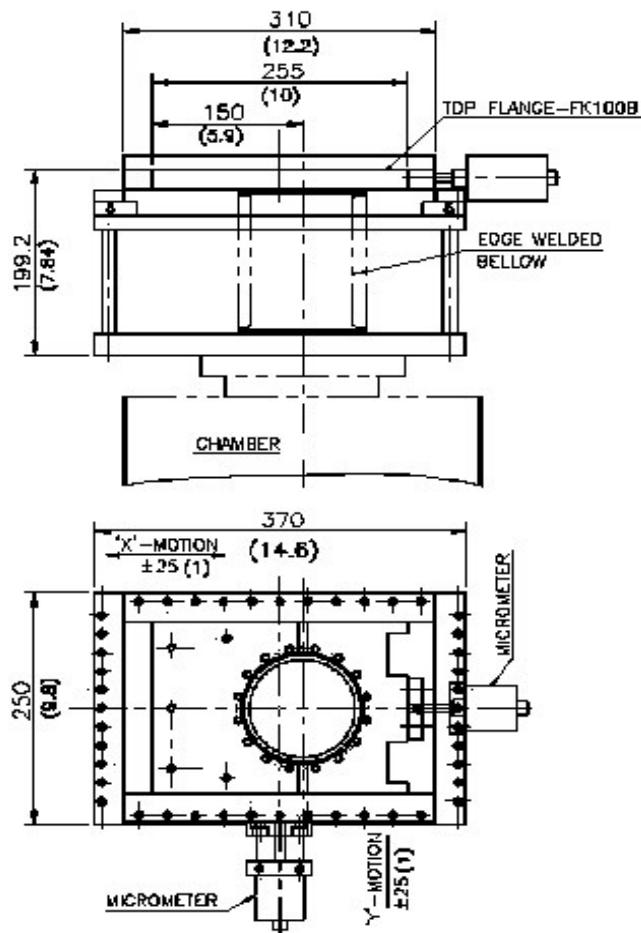
2.5 Weights & Dimensions: as per enclosed sheet



HIGH QUALITY SCIENTIFIC RESOURCES

XY-MODULE
(XYZ MANIPULATOR)

NET WEIGHT~23Kg



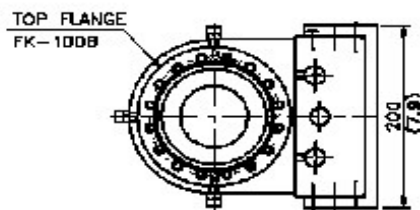
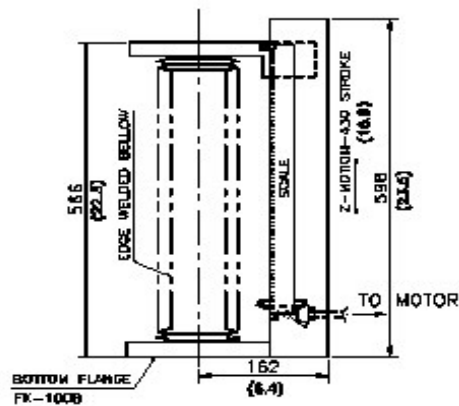
ALL DIMENSIONS ARE IN MM & BRACKETED DIMENSIONS ARE IN INCHES.



HIGH QUALITY SCIENTIFIC RESOURCES

Z-MODULE
(XYZ-MANIPULATOR)

NET WEIGHT~25Kg



NOTE-ALL DIMENSIONS ARE IN MM.& BRACKETED DIM ARE IN INCH'S.



HIGH QUALITY SCIENTIFIC RESOURCES

COMPACT Z-STAGE

1.0 FEATURES:

- UHV compatible materials
- Manual or motorized actuation
- Edge welded bellow seal
- Bakeable to 230⁰ C
- 25 to 100 mm linear travel
- Suitable with CF16,CF35 & CF63 flanges
- Fitted with tapped flanges at both ends

2.0 SPECIFICATIONS:

2.1 Materials:

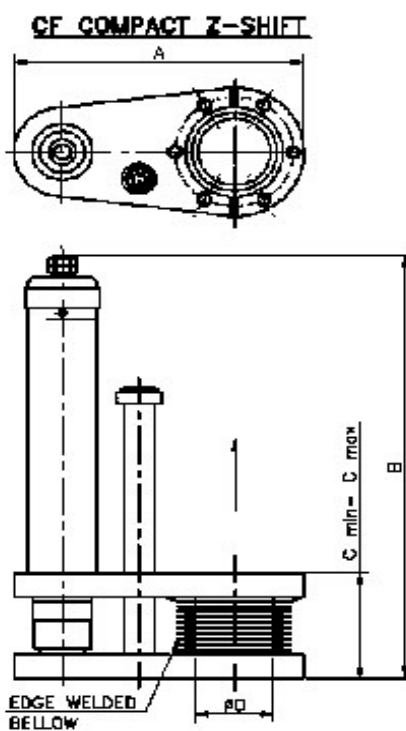
Flanges/Body : AISI-304
Bellow : AISI-347

2.2 Vacuum Range: < 5x10⁻¹⁰ Torr

2.3 Leak Rate : < 2x10⁻¹⁰ std cc/sec of Helium

2.4 Temperature Range: -20⁰ C to 230⁰ C

2.5 Weights & Dimensions: as per enclosed sheet



ORDER CODE	A	B	C MIN	C MAX	Ø	Net. Wt. Kg
FC382960	144.7 (5.7)	170 (6.69)	49 (1.93)	99 (3.9)	38.1 (1.5)	
FC3828100	144.7 (5.7)	238 (9.37)	64 (2.52)	194 (7.64)	38.1 (1.5)	3.8
FC3828150	144.7 (5.7)	285 (11.4)	75 (2.95)	225 (8.86)	38.1 (1.5)	

NOTE—ALL DIMENSIONS ARE IN MM. & BRACKETED DIMENSIONS ARE IN INCHES.



HIGH QUALITY SCIENTIFIC RESOURCES

LINEAR DRIVE CF-TYPE

1.0 FEATURES:

- 25 & 50 mm linear travel
- Linear position lock
- Edge welded bellow seal
- Mounting flange : CF 35 type
- Micrometer heads

2.0 SPECIFICATIONS:

2.1 Materials:

Flange / Body : AISI-304
Bellow : AISI-347

2.2 Vacuum Range: $< 5 \times 10^{-10}$ Torr

2.3 Leak Rate : $< 2 \times 10^{-10}$ std cc/sec of Helium

2.4 Temperature Range: -20° C to 230° C

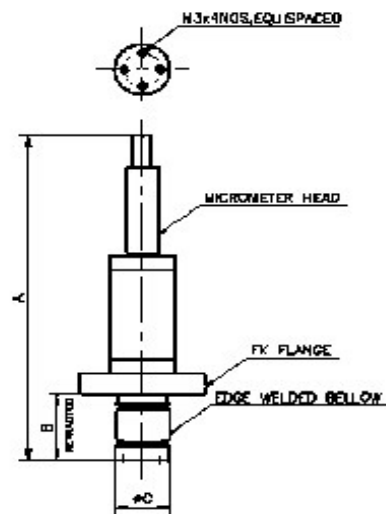
2.5 Least count : 0.01 mm

2.6 Axial load: 2 kg maximum

2.7 Lateral load: 2 kg @ 50 mm extension maximum

2.8 Weights & Dimensions: as per enclosed sheet

CF LINEAR DRIVE



ORDER CODE	FK FLANGE TYPE	A	B	C	NET WEIGHT (APPROX.) IN KG.
FK 35 LM 25	35	197 (7.76)	40 (1.57)	30.5 (1.2)	2
FK 35 LM 50	35	260 (10.24)	40 (1.57)	31.7 (1.25)	
FK 63 LM 50	63	264 (10.38)	40 (1.57)	31.7 (1.25)	

NOTE-ALL DIMENSIONS ARE IN MM; BRACKETED DIMENSIONS ARE IN INCHES.



HIGH QUALITY SCIENTIFIC RESOURCES

QUICK ACCESS DOOR

1.0 FEATURES:

- CF port mounts
- Clearance or tapped hole mounting port flanges
- Bakeable to 150⁰ C
- Viton ® elastomer door seal

2.0 SPECIFICATIONS:

2.1 Materials:

Flange : AISI-304

Door seal : Viton ®

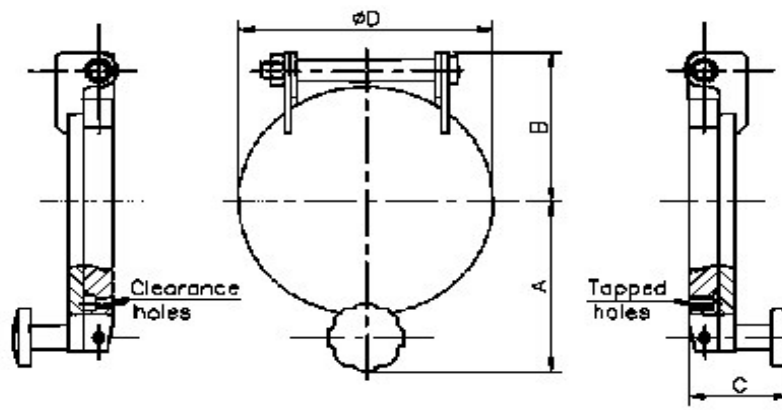
2.2 Vacuum Range : 1×10^{-7} Torr

2.2 Leak Rate : $< 2 \times 10^{-10}$ std cc/sec of Helium

2.3 Temperature Range : -20⁰ C to 150⁰ C

2.4 Weights & Dimensions : as per enclosed sheet

CF QUICK-ACCESS BLANK DOORS:



S.NO.	FLANGE	D	A	B	C	NET WEIGHT (APPROX.) IN Kg.	ORDER CODE
1	CF-100	151.8 (5.98)	125 (4.9)	105 (4.1)	74 (2.9)	5.5	QAD-FK100
2	CF-150	202.4 (7.96)	151 (5.9)	131 (5.2)	75 (3)	10	QAD-FK150

NOTE: ALL DIMENSIONS ARE IN mm & BRACKETED DIMENSIONS ARE IN INCHES.